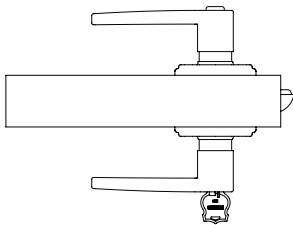


Levers

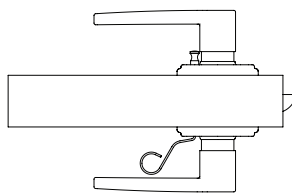
Specifications

Door Preparation:	Cross bore 2 1/8", edge bore 1", 1" x 2 1/4" latch mortise
Backset:	2 3/8" or 2 3/4"
Door Thickness:	1 3/8" to 1 3/4"
Cylinder:	KW1 standard, SC1 available, 5 pin
Chassis:	Cylindrical
Faceplate:	2 1/4" Round corner, drive-in available
Strikes:	2 1/4" full rim standard for entry, 2 1/4" full lip standard for interior, others available
Bolt:	1/2" Throw
UL:	90 Minute fire rated available
ADA:	Levers are ADA compliant
Door Handing:	All hardware is reversible for left or right handed doors except the Glenshaw entry levers in contractor boxes or Glenshaw dummy levers. These need to be specified for left or right handed doors.
ANSI Grading:	Meets Grade 2 standards

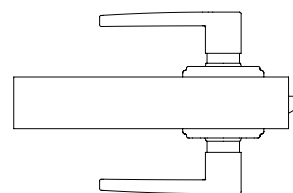
Functions



Keyed Entry



Privacy



Passage



Dummy

Finishes



Polished Chrome
Harper



Satin Nickel
Anna

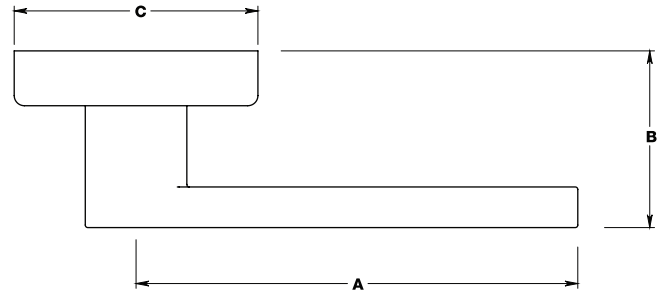


Tuscan Bronze®
Arnett



Polished Brass
Glenshaw

Dimensions



*Dimensions shown are for outside lever, passage function, 1 3/8" thick door

Style	A(in)	B(in)	C(in)
Lexa	4.25	2.43	2.95
Anna	4.25	2.43	3.00
Harper	4.11	2.40	2.95
Alwood	4.13	2.72	2.95
Glenshaw	4.11	2.45	2.95
Arnett	4.25	2.51	2.95

Finishes	Polished Brass (105)	Satin Nickel (119)	Polished Chrome (125)	Tuscan Bronze® (150)
Lexa		•	•	
Anna		•	•	
Harper		•	•	•
Alwood	•	•	•	•
Glenshaw	•	•	•	•
Arnett		•		•